

Disney

User's Manual



## ROYAL LEARNING TABLET



**2-5**  
Years

vtech®

© Disney  
Visit [DisneyJunior.com](http://DisneyJunior.com)

© 2014 VTech  
Printed in China  
91-009669-001 UK

**VTech understands that a child's needs and abilities change as they grow and with that in mind we develop our toys to teach and entertain at just the right level...**

## **vtech** Baby

**Toys that will stimulate their interest in different textures, sounds and colours**

### **I am...**

...responding to colours, sounds and textures

...understanding cause and effect

...learning to touch, reach, grasp, sit-up, crawl and toddle

**Birth-36 months**



## **Pre-School**

**Interactive toys to develop their imagination and encourage language development**

### **I want...**

...to get ready for school by starting to learn the alphabet and counting

...my learning to be as fun, easy and exciting as can be

...to show my creativity with drawing and music so my whole brain develops

**3-6 years**



## **Electronic Learning Computers**

**Cool, aspirational and inspiring computers for curriculum related learning**

### **I need...**

...challenging activities that can keep pace with my growing mind

...intelligent technology that adapts to my level of learning

...National Curriculum based content to support what I'm learning at school

**4-10 years**

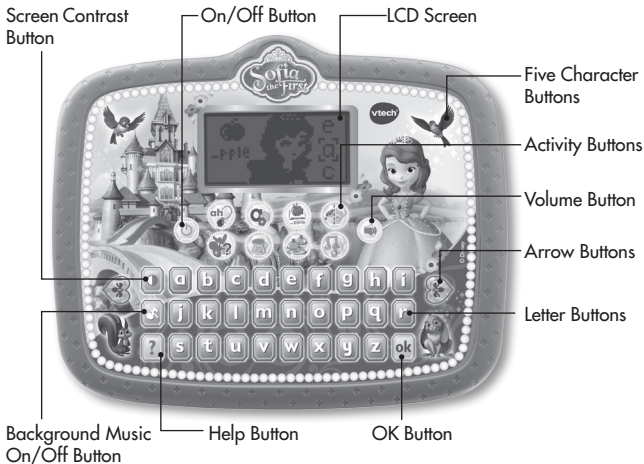


To learn more about this and other VTech® products, visit [www.vtechuk.com](http://www.vtechuk.com)

# INTRODUCTION

Thank you for purchasing the **VTech® Royal Learning Tablet**.

Join Sofia and her animal friends in eight interesting activities that teach letters, phonics, logic, music and more. With the **Royal Learning Tablet** by **VTech®**, royal learning is just a touch away!



## INCLUDED IN THIS PACKAGE

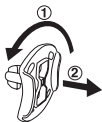
- One **VTech® Royal Learning Tablet**
- One User's Manual

## WARNING:

All packing materials, such as tape, plastic sheets, packaging locks and tags are not part of this toy, and should be discarded for your child's safety.

**NOTE:** Please keep the user's manual as it contains important information.

## Unlock the packaging locks:

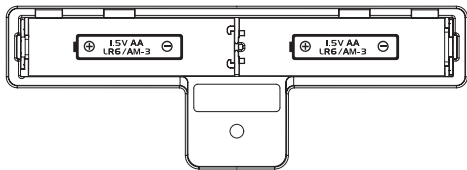


- ① Rotate the packaging lock 90 degrees anti-clockwise.
- ② Pull out the packaging lock.

# GETTING STARTED

## BATTERY INSTALLATION

1. Make sure the unit is **OFF**.
2. Locate the battery cover at the back of the unit.
3. Use screwdriver or coin to open the battery cover.
4. Install 2 new "AA" Size (AM3/LR6) batteries following the diagram inside the battery box. (The use of new alkaline batteries is recommended for maximum performance.)
5. Replace the battery cover and tighten the screw to secure.



## BATTERY NOTICE

- Use new alkaline batteries for maximum performance.
- Use only batteries of the same or equivalent type as recommended.
- Do not mix different types of batteries: alkaline, standard (carbon-zinc) or rechargeable (Ni-Cd, Ni-MH), or new and used batteries.
- Do not use damaged batteries.
- Insert batteries with the correct polarity.
- Do not short-circuit the battery terminals.
- Remove exhausted batteries from the toy.
- Remove batteries during long periods of non-use.
- Do not dispose of batteries in fire.
- Do not charge non-rechargeable batteries.
- Remove rechargeable batteries from the toy before charging (if removable).
- Rechargeable batteries are only to be charged under adult supervision.

## Disposal of batteries and product



The crossed-out wheellie bin symbols on products and batteries, or on their respective packaging, indicates they must not be disposed of in domestic waste as they contain substances that can be damaging to the environment and human health.



The chemical symbols Hg, Cd or Pb, where marked, indicate that the battery contains more than the specified value of mercury (Hg), cadmium (Cd) or lead (Pb) set out in Battery Directive (2006/66/EC).

The solid bar indicates that the product was placed on the market after 13th August, 2005.

Help protect the environment by disposing of your product or batteries responsibly.

For more information, please visit:

[www.recycle-more.co.uk](http://www.recycle-more.co.uk)

[www.recyclenow.com](http://www.recyclenow.com)

# PRODUCT FEATURES

## 1. ON/OFF BUTTON



Press the **On/Off Button** to turn the unit **On** and press it again to turn the unit **Off**.

## 2. FIVE CHARACTER BUTTONS



Press the five **Character Buttons** to play or get to know Princess Sofia, Mia, Robin, Whatnaught and Clover.

## 3. VOLUME BUTTON



Press the **Volume Button** to adjust the volume. Use the **Left Arrow Button** to reduce the volume, or use the **Right Arrow Button** to raise the volume. Press the **OK Button** to confirm your choice.

## 4. SCREEN CONTRAST BUTTON



Press the **Screen Contrast Button** to adjust the screen contrast. Use the **Left Arrow Button** to lighten the contrast, or use the **Right Arrow Button** to darken the contrast. Press the **OK Button** to confirm your choice.

## 5. BACKGROUND MUSIC ON/OFF BUTTON



Press the **Background Music On/Off Button** to turn the background music on or off.

## 6. ACTIVITY BUTTONS



There are eight **Activity Buttons**. Press a button to enter that activity.

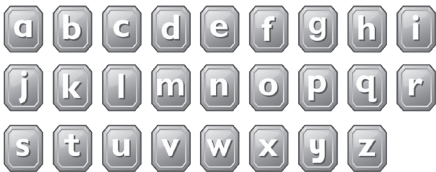
## 7. OK BUTTON

Press the **OK Button** to confirm your choice in a menu or activity.

## 8. ARROW BUTTONS

Press the **Arrow Buttons** to make a selection in a menu or activity.

## 9. LETTER BUTTONS



Press the **Letter Buttons** to learn letters or to answer letter-related questions.

## 10. HELP BUTTON

Press this button to repeat the current question or instruction, or to receive a useful hint in some activities.

## 11. AUTOMATIC SHUT-OFF

To preserve battery life, the unit will automatically turn off after several minutes without input. The unit can be turned on again by pressing the **On/Off Button**. The unit will also automatically turn off when the batteries are very low. A warning will be displayed on screen as a reminder to change the batteries.

## ACTIVITIES

The **VTech® Royal Learning Tablet** offers a total of eight fun activities to play.

### 01. Words & Phonics



Learn letters, phonics and words with Sofia and the 3 good fairies at Royal Prep Academy. Press a **Letter Button** or use the **Arrow Buttons** then press the **OK Button** to play.



### 02. Guess the Letter



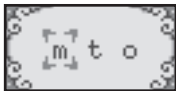
Help Sofia guess which letter is partly covered by a flower. Use the **Arrow Buttons** to move the flower left or right to see different parts of the letter then press a **Letter Button** to answer.



### 03. Royal Prep Library



Sofia is helping put books away in the Royal Prep library. Can you help her? Listen to the questions and press a **Letter Button** to answer. Or, use the **Arrow Buttons** to choose the correct answer and then press the **OK Button** to confirm your choice.





## 04. Picture Puzzle



Help Sofia fix the broken objects by matching the pictures correctly. Use the **Arrow Buttons** to choose the correct picture, and then press the **OK Button** to confirm your choice.



## 05. Guess Who?



It's time for hide-and-seek fun! Sofia and her animal friends will appear on the screen one at a time. Watch carefully! Press the correct **Character Button** when one of them appears.



## 06. Cedric's Potion



Help Sofia choose the correct ingredients for Mr. Cedric's new potion. Use the **Arrow Buttons** to choose the correct ingredient, and then press the **OK Button** to confirm your choice.



## 07. Lunch for Clover



Help Clover win the game and get the carrot. Three plates will appear on the screen. Watch carefully to see where the carrot goes! Use the **Arrow Buttons** to choose the correct plate, and then press the **OK Button** to confirm your choice.



## 08. Music Time



Dance with Sofia! There are 10 melodies to choose from. Use the **Arrow Buttons** to select a melody, and then press the **OK Button** to play. Press the **Letter Buttons** to see some surprises or press the **Character Buttons** to change the dancer!



# CARE & MAINTENANCE

1. Keep the unit clean by wiping it with a slightly damp cloth.
2. Keep the unit out of direct sunlight and away from any direct heat sources.
3. Remove the batteries when the unit is not in use for an extended period of time.
4. Do not drop the unit on a hard surface and do not expose the unit to excess moisture or water.

# TROUBLESHOOTING

If for some reason the program/activity stops working or malfunctions, then please follow these steps:

1. Turn the unit **OFF**.
2. Interrupt the power supply by removing the batteries.
3. Let the unit stand for a few minutes, then replace the batteries.
4. Turn the unit back **ON**. The unit will now be ready to play again.
5. If the unit still does not work, replace with an entire set of new batteries.

If the problem persists, please call our Consumer Services Department on 01235 546810 (from UK) or +44 1235 546810 (outside UK) and a service representative will be happy to help you.

# TECHNICAL SUPPORT

If you have a problem that cannot be solved by using this manual, we encourage you to visit us online or contact our Consumer Services Department with any problems and/or suggestions that you might have. A support representative will be happy to assist you.

Before requesting support, please be ready to provide or include the information below:

- The name of your product or model number (the model number is typically located on the back or bottom of your product).
- The actual problem you are experiencing.
- The actions you took right before the problem started.

**Internet:** [www.vtechuk.com](http://www.vtechuk.com)

**Phone:** 01235 546810 (from UK), or +44 1235 546810 (outside UK)

## **IMPORTANT NOTE:**

Creating and developing **VTech® Preschool Learning** products is accompanied by a responsibility that we at **VTech®** take very seriously. We make every effort to ensure the accuracy of the information, which forms the value of our products. However, errors sometimes can occur. It is important for you to know that we stand behind our products and encourage you to call our Consumer Services Department on 01235 546810 (from UK), or +44 1235 546810 (outside UK) with any problems and/or suggestions that you might have. A service representative will be happy to help you.



## PRODUCT WARRANTY



Thank you for choosing this quality product from VTech. We hope it will bring many hours of entertainment, imaginative play and learning.

1. The product detailed above is covered by a one year warranty from the date of purchase, against any defects in materials or workmanship.
2. The product may be returned to the place of purchase. Alternatively the product can be returned to VTech Electronics Europe plc (see address below), with proof of purchase, without proof of purchase no replacement will be provided.
3. VTech Electronics Europe plc will examine the product and if it is found to be defective due to faulty materials or workmanship, will replace the product at their discretion.
4. If the product covered by this warranty is damaged due to misuse, modification or unauthorised repair, or because of faulty batteries, battery discharge or incorrect electrical connections, then this warranty becomes void.
5. This warranty is personal to the original purchaser and is not transferable.
6. Breakages to the LCD screen are not covered by the warranty.
7. Returns to VTech Electronics Europe plc should include a cheque or postal order for £1.50 towards the cost of return postage and packaging.
8. Products returned to VTech Electronics Europe plc, should be addressed as follows and packed carefully to avoid damage in transit (Please do not include batteries or adaptor).  
Please include details of the fault together with your name and address.

VTech Electronics Europe plc, c/o Tablogix Limited, 200 Milton Park, Abingdon, Oxon OX14 4TA

**THIS WARRANTY IS OFFERED AS AN EXTRA BENEFIT AND DOES NOT AFFECT CONSUMERS' STATUTORY RIGHTS.**

Join the VTech club online at [www.vtechuk.com](http://www.vtechuk.com)



This warranty is valid for the UK and Eire only. For products purchased outside the UK and Eire, please contact your local distributor or place of purchase.